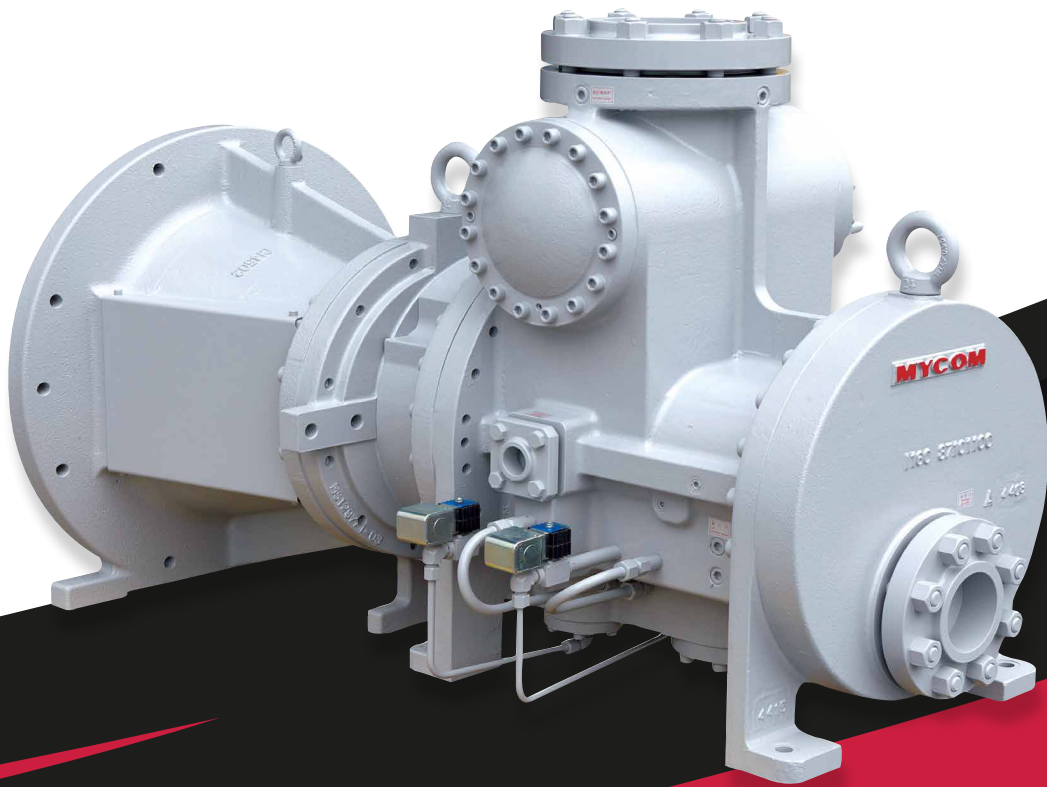




MAYEKAWA
MYCOM

Series

Screw Compressor



Single Stage
Open Type

<https://mayekawa.com/americas/mna>



Series

i-Series Screw Compressor

Compact & Simple - A reliable cooling unit is realized

FLANGED MOTOR MOUNT

The flanged motor eliminates the need for time consuming field alignment during startup.

BUILT-IN SUCTION STRAINER AND CHECK VALVE

Integral suction strainer and check valve facilitate ease of maintenance.

DIFFERENTIAL OIL FEED

Roller element bearings allow for differential oil low from startup. Therefore, no oil pump is required reducing energy and maintenance.

UNLOADING SYSTEM

Three steps of unloading are available (100%, 75% and 50%) for quick and efficient load matching. Compressor speed control is available as an option.



INTELLIGENT LAYOUT

The compressor layout is designed for simple piping reducing installation cost.

HIGH EFFICIENCY, REDUCED VIBRATION AND LOW NOISE

Mayekawa's original rotor and casing design yields a threefold advantage in efficiency, vibration and noise.

CAPACITY

Model \ Refrigerant	i125L				i160M			
	R717		R404A		R717		R404A	
	Cooling Capacity (kW)	Absorbed Power (kW)	Cooling Capacity (kW)	Absorbed Power (kW)	Cooling Capacity (kW)	Absorbed Power (kW)	Cooling Capacity (kW)	Absorbed Power (kW)
0	274.2	53.4	263.5	61.9	497.3	92.8	478.3	107.5
-5	225.7	52.4	217.7	61.3	409.6	91.0	395.5	106.6
-10	183.3	50.3	178.3	60.8	332.9	87.5	324.3	105.7
-15	148.3	47.9	144.6	60.4	269.6	83.3	263.3	104.9
-20	118.5	45.9	116.6	57.6	215.6	79.8	212.6	100.1
-25	93.3	44.2	92.9	55.2	170.0	76.8	169.8	95.9

This table is created based on Number-of-rotations : 2950 rpm, Condensing Temperature: +35 °C, SH5K, SC:5K

SPECIFICATIONS

Items			Model				
			i125S	i125L	i160S	i160M	i160L
Single unit weight	*Note 1	kg	490	510	670	710	750
Motor connection	NEMA	-	3**C, 40°C		3**D, 4**D		
Standard speed	50Hz/60Hz	rpm	2950/3550 *Note 2				
Rotation direction		-	Clockwise as viewed from motor				
Displacement	50Hz/60Hz	m ³ /h	197/237	296/356	415/499	519/624	622/749
		CFM	116/139	174/210	244/294	305/367	366/441
Refrigerant		-	R717 / R404A / R507A / R134a				
Design pressure	*Note 3	MPa	2.6				
Capacity control		-	3-step (100%, 75%, 50%) unloader				
Connecting pipe size	Suction flange	-	MYCOM 100A (4")		ANSI 300 # 5"		
	Discharge flange	-	MYCOM 65A (2-1/2")		ANSI 300 # 3"		
	Oil inlet port	-	Rc1/2		Rc1		
	Economizer	-	Rc3/8		Rc3/4		
	Aquamizer(Liquid injection)	-	Rc1/4		Rc1/2		

*Note 1: Weight includes NEMA motor spacer

*Note 2: The maximum rotation speed of i125S and i160S is available to 4500 rpm

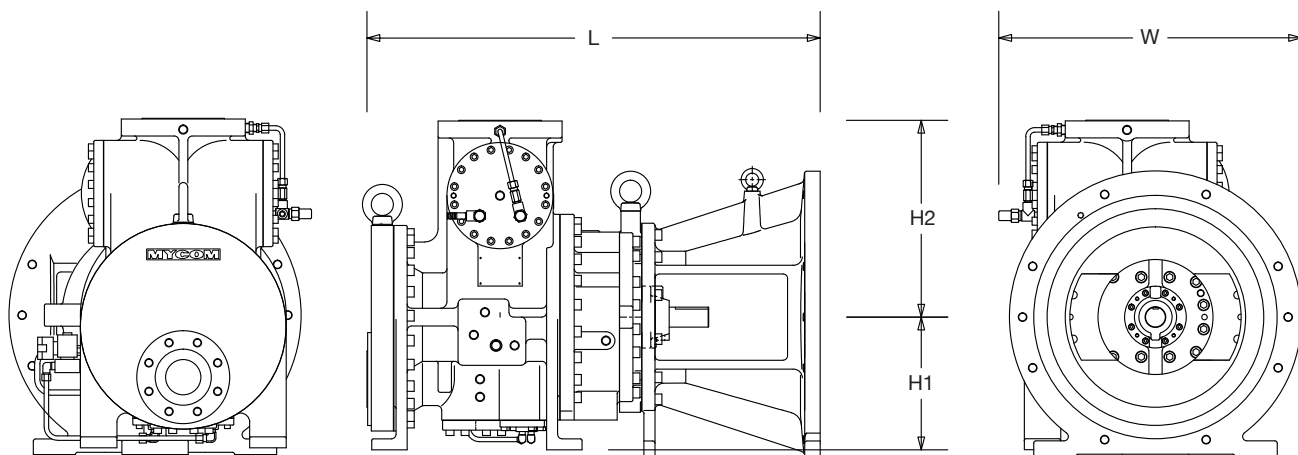
*Note 3: The design pressure may vary according to local regulations and codes. Actual design pressure may be lower than indicated. Please check local regulation and codes for specifics. Confirm actual pressure on the name plate and individual specification.

Unless otherwise noted, the pressure unit MPa represents the gauge pressure.

For the limits of working temperature, pressure and speed, please read "Instruction Manual"

DIMENSIONS

Dimensions are for reference only. Please contact MYCOM for more detailed drawings.



Model	Dimensions(mm/inch)	Dimensions				
		L	W	H1	H2	H2 (Without Eyebolt)
i125S		906.5/35.69	550/21.65	280/11.02	519/20.43	448/17.64
i125L		976.5/38.44	550/21.65	280/11.02	519/20.43	448/17.64
i160S		969.5/38.17	684/26.93	300/11.81	445/17.52	
i160M		1014.5/39.94	684/26.93	300/11.81	445/17.52	
i160L		1059.5/41.71	684/26.93	300/11.81	445/17.52	

MAYEKAWA USA, INC.
<https://mayekawa.com/americas/mna>

Tel: +1 (615) 773-2859
24 Hr Service: +1 (800) 836-9266
Email: info@mayekawausa.com

MAYEKAWA CANADA, INC.
<https://mayekawa.com/americas/mna>

Vancouver: +1 (604) 270-1544
Calgary: +1 (403) 250-1554
Toronto: +1 (905) 564-0664